

Optional Items

265024040G(03)



**Smart Innovative
Evolution at Its Best**

Spirit PRO Series

Specification		Spirit LS PRO	Spirit GLS Hybrid PRO
Work Area		640 x 460 mm (25 x 18 in.) Extendable to 740 x 460 mm (29 x 18 in.)	860 x 610 mm (34 x 24 in.) Extendable to 960 x 610 mm (38 x 24 in.)
Max. Part Size (L x W x H)	All doors closed	762 x 482.6 x 165 mm (30 x 19 x 6.5 in.)	990 x 635 x 177 mm (39 x 25 x 7 in.)
	All doors open	762 x ∞ x 165 mm (30 x ∞ x 6.5 in.)	990 x ∞ x 177 mm (39 x ∞ x 7 in.)
Dimensions (W x D x H)		1,133 x 774 x 1,010 mm (44.6 x 30.5 x 39.8 in.)	1,373 x 934 x 1,010 mm (54.1 x 36.8 x 39.8 in.)
Laser Source	CO ₂	30W to 100W 10.6-μm sealed CO ₂ Laser	
	Fiber	30W or 60W fiber laser	
	Dual	Not Available	Available
Cooling		Air-cooled, Operating environment temperature 15°- 30°C (59°- 86°F)	
Drive		Closed-loop DC servo control	
Maximum Engraving Speed*	CO ₂	30W - 40W: 2.54 m/s (100 in/s) / 60W - 100W: 3.04 m/s (120 in/s)	
	Fiber	30W or 60W: 3.04 m/s (120 in/s)	
	Dual	Not Available	CO ₂ 30W - 40W & Fiber 30W or 60W : 2.54 m/s (100 in/s) CO ₂ 60W - 100W & Fiber 30W or 60W : 3.04 m/s (120 in/s)
Speed Control		Adjustable from 0.1~100% (Up to 16 color-linked speed settings per job)	
Power Control		Adjustable from 0~100% (Up to 16 color-linked power settings per job)	
Engraving Capability		256-level gray scale image processing capability	
Z-Axis Movement		Automatic	
Camera	SmartEYES	Standard	
	SmartVISION Elite	Optional	
Focus Lens	CO ₂	Standard 2.0", optional 1.5", 2.5", & 4.0" available	
	Fiber	Standard 4.0", optional 2.0" available	
	Dual	Standard 2.0", optional 3.0" & 4.0" available	
Resolution (DPI)		Available 125, 250, 300, 380, 500, 600, 760, 1000, 1500	
Interface		10 Base-T Ethernet, USB Type-A 2.0 - For USB storage (Max. 32GB capacity, FAT file system) USB Type-B 2.0 - For connecting with the computer	
	Compatible Operating Systems	MS Windows	
Control Panel		4" Touch panel	
Safety		Class 1 Laser Product Compliant with EN60825, Class 2 Laser Product Compliant with CDRH, 2006/42/EC Machinery Directive Compliance Class 4 Laser Product Compliant with CDRH with the optional pass-through door module	
Operation Voltage	CO ₂	30W - 60W: 100-240VAC, 50-60Hz Auto Switching, Max. 15A 80W and Above: 200-240VAC, 50-60Hz Auto Switching, Max. 15A	
	Fiber	30W or 60W: 100-240VAC, 50-60Hz Auto Switching, Max. 8A	
Fume Extraction System		External exhaust system with minimum flow rate 640m ³ /h (CFM 377 ft ³ /min) is required. 2.3kPA negative pressure (Pure-Air PA-1000FS @ 4" exhaust port)	External exhaust system with minimum flow rate 800m ³ /h (CFM 471 ft ³ /min) is required. 2.3kPA negative pressure (Pure-Air PA-1500FS @ 4" exhaust port)



* Speed is not equal throughput. See dealer or visit <http://www.GCCworld.com> for more details.
** The flow rate is determined by a default fume extraction system; the flow rate may vary due to a different fume extraction system.
A Specifications are subject to change without prior notice.

Authorized Dealer

- 740 x 460 mm (29 x 18 in.) and 960 x 610 mm (38 x 24 in.) working area
- Up to 3.04 m/s (120 in/s) high engraving speed
- Equipped with the SmartEYES™ CCD, enabling easier positioning and a real-time Live-view function.
- Closed-loop DC servo control for precise movement of laser carriage
- Two laser sources, CO₂ laser and Fiber laser, are available
- Reliable DuraGuide motion system with reinforced Kevlar belt delivers superb output quality
- Plug and play standard USB port for rapid data transmission
- Patented SmartGUARD™ fire alarm device to provide maximum operation safety (optional)



www.GCCworld.com



GCC Headquarters 4F-1, No.236, Fude 2nd Rd., Xizhi Dist., New Taipei City 22151, Taiwan 886-2-6616-8692 Fax: 886-2-2694-6875
 GCC China No.1, Chen Feng Road, Yushan, Kunshan, Jiangsu 215300, China 86-512-5726-1515 Fax: 86-512-5726-1518
 GCC Europe B.V. Eglantierbaan 43-45, 2908 LV, Capelle a/d IJssel, The Netherlands 31-10-458-9367
 GCC America, Inc 20550 Carrey Road, Walnut, CA 91789, USA 1-909-718-0248 Fax: 1-909-718-0251
 US & Canada Only Toll Free: 1-888-284-5211



Spirit GLS Hybrid PRO
(CO2 / Fiber / Dual Model)

Spirit LS PRO
(CO2 / Fiber Model)

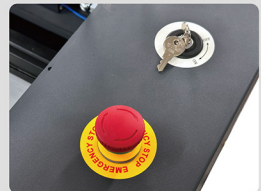
LaserPro Spirit PRO series distinguishes itself from the competition by combining unparalleled speed, output quality, reliability, and user-friendliness. With an abundance of useful and innovative features, the Spirit PRO series sets the standard as the industrial benchmark for laser engravers.

FEATURES



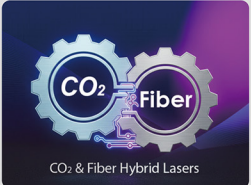
SmartPIN™ AutoFocus (Patented)

The plug-and-play probe design makes focusing a one-touch process and provides the accuracy and precision required for optimum quality in the lasing process.



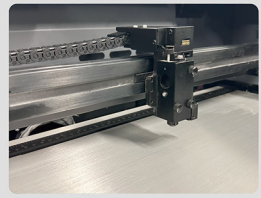
Key Switch & Emergency Stop

Key switch safeguards the machine from unauthorized use. Prominent emergency button located on the top of the machine allows operators to stop the laser and the motion carriage immediately to provide a safe operating environment.



CO2 & Fiber Hybrid Lasers (Spirit GLS Hybrid PRO Only)

GCC Hybrid technology allows to install CO2 & Fiber dual lasers in one system to expand your business from organic materials processing to direct metal engraving.



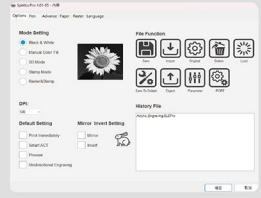
DuraGuide

Systematic and reliable motion system embedded with strong mechanical framework, reinforced Kevlar belts, and accurate servomotor control technology to deliver superb output quality under rapid movement.



Easy to use 4" Touch Panel

A touch panel with coherent hot-key design and graphic icon displays that allows you to directly change the laser parameter setting, set jobs to repeat unlimited times, queue jobs, delete jobs, and more.



Innovative Software Features

New UI design for a fresh look. Various user friendly features such as SmartCENTER™, Defocus by pen, allows users to reduce set up time and make easy adjustments to achieve marvelous output quality.



SmartEYES™ & Live-view Camera

A single camera provides both the SmartEYES™ precise design preview for effortless positioning and the real-time Live-view function, making it an ideal tool for observation and learning.



SmartLID™ (Patented)

An innovative lid that opens from both ends allowing easier access for daily maintenance.

APPLICATION

Laser Engraving & Laser Cutting



Aluminum Spoon



Packaging Belt



Acrylic



Bookmark



Tumbler



Storage Tin Box